

SONOMA ISLES PLAT 2

LYING IN SECTION 32, TOWNSHIP 40 SOUTH, RANGE 42 EAST AND SECTION 5, TOWNSHIP 41 SOUTH, RANGE 42 EAST,
TOWN OF JUPITER, PALM BEACH COUNTY, FLORIDA, BEING A RE-PLAT OF PARCELS "N-1," "N-2" AND "P," PLAT OF SONOMA ISLES,
AS RECORDED IN PLAT BOOK 120, PAGES 167 THROUGH 179, INCLUSIVE, PUBLIC RECORDS OF PALM BEACH COUNTY, FLORIDA.
SHEET 2 OF 5 MARCH, 2016

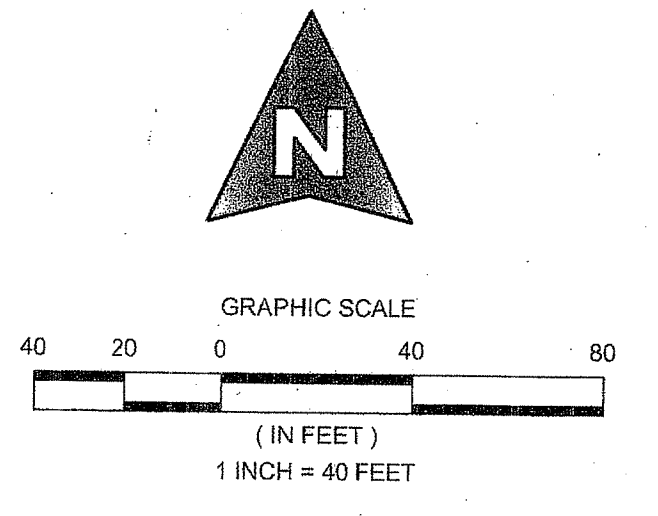
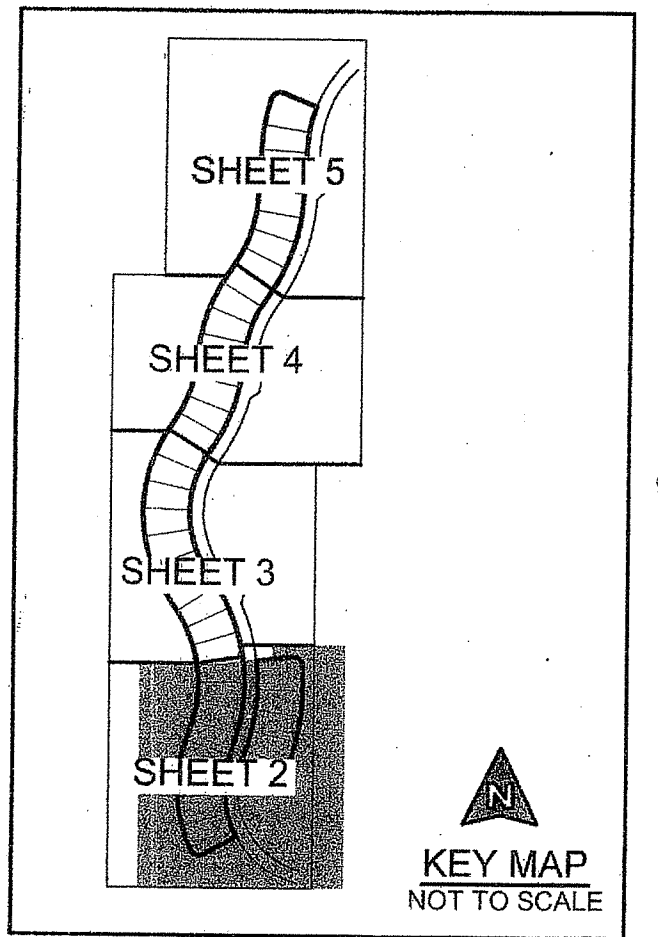
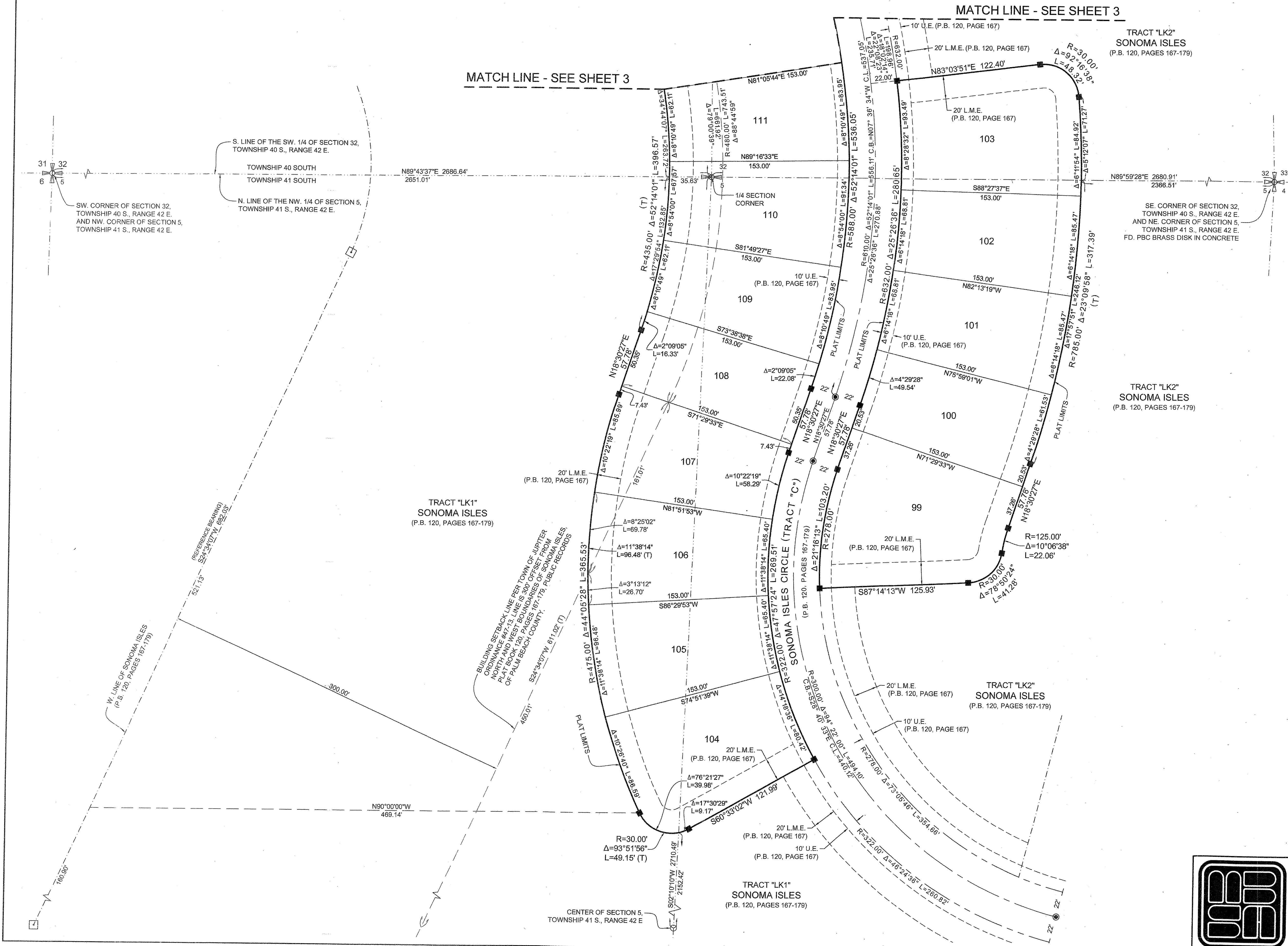
112

COUNTY OF PALM BEACH)
STATE OF FLORIDA) SS

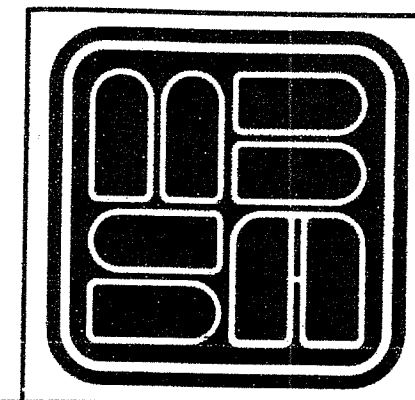
THIS PLAT WAS FILED FOR RECORD AT _____ M. THIS _____ DAY OF _____, 2016, AND DULY RECORDED IN PLAT BOOK NO. _____ ON PAGE _____ THRU _____

SHARON R. BOCK,
CLERK AND COMPTROLLER

BY: _____ D.C.



SHEET 2 OF 5



MICHAEL B. SCHORAH & ASSOCIATES, INC.
1850 FOREST HILL BLVD., SUITE 206
WEST PALM BEACH, FLORIDA 33406
EB# 2438 TEL. (561) 968-0080 FAX. (561) 642-9726 LB# 2438

SONOMA ISLES PLAT 2